



Stevenson Road, Coventry, CV6 2JW

**Loveitts**  
PART OF | SHELDON BOSLEY KNIGHT



# Property Description

A fantastic opportunity to acquire this well presented, two bedroom and a further loft room terraced property positioned in the highly sought after residential location of Coundon. The property is perfect for a first time buyer, family or investor and is offered for sale with a garage at the rear

The ground floor accommodation comprises entrance hallway with stairs rising to the first floor, lounge, fitted kitchen, conservatory, utility room, two bedrooms, a useful loft room and a family bathroom. Externally the property boasts driveway and secure rear garden with rear garage.

Further benefits include gas central heating and double glazing throughout.







# Key Features

- Two Bedroom property
- Garage to the rear
- Well presented
- Loft Room
- Driveway to the front
- Conservatory and Utility room
- Call no to arrange a viewing
- EPC - TBC

**Offers Over  
£190,000**

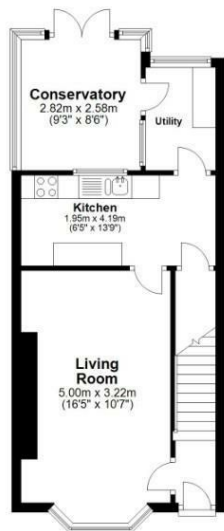
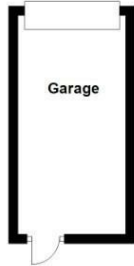
EPC Rating -

Tenure - Freehold

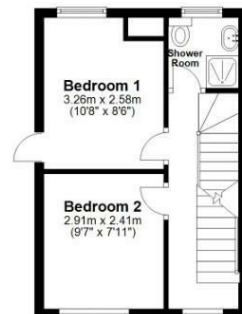
Council Tax Band -

Local Authority -

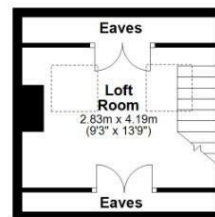
**Ground Floor**  
Approx. 52.0 sq. metres (559.7 sq. feet)



**First Floor**  
Approx. 25.8 sq. metres (277.5 sq. feet)



**Second Floor**  
Approx. 16.7 sq. metres (180.0 sq. feet)



Total area: approx. 94.5 sq. metres (1017.1 sq. feet)

All efforts have been made to ensure that the measurements on this floorplan are accurate however these are for guidance purposes only.  
Plan produced using PlanUp.

We routinely refer clients to both our recommended Legal Firm and a panel of Financial Services Providers. It is your decision whether you choose to deal with these companies. In making that decision, you should know that we receive a referral fee